



CASE STUDY

North Tees & Hartlepool NHS Trust

North Tees and Hartlepool NHS Foundation Trust runs the University Hospital of North Tees to provide integrated hospital and community services across Hartlepool, Stockton and parts of County Durham.



North Tees and Hartlepool
NHS Foundation Trust

The Challenge

Design and manufacture ergonomic workstations to maximise the benefits of the laboratory environment. This includes increasing employee retention, lowering the risk of repetitive strain injury (RSI) and improve the workplace environment resulting in enhanced efficiency and productivity.

Work collaboratively with project managers, architects and contractors throughout the project to deliver and install the workstations in accordance with the overall project's scope and schedule.

IN PARTNERSHIP WITH



**GEOFFREY
ROBINSON**
SINCE 1971

P+HS
architects

NHS
North Tees and Hartlepool
NHS Foundation Trust

slee solutions
for
pathology

Where It All Began

During the IBMS Congress at the ICC Birmingham in March 2022, Solmedia in partnership with Slee Medical, showcased their latest innovation, an ergonomic workstation that is specifically designed for laboratories and addressed workplace issues with its ergonomic solutions.

The workstation aptly named "Ergotec" offers features that directly address repetitive strain injuries, fatigue and diversity. Its specification is completely bespoke, offering the opportunity to customise the entire workstation and its features to meet individual needs.

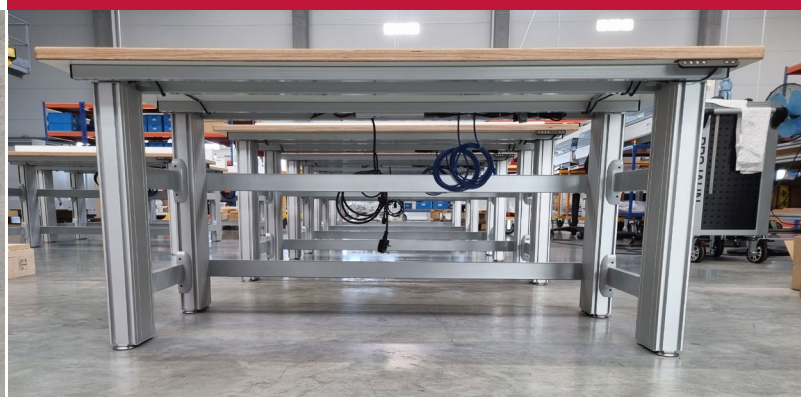
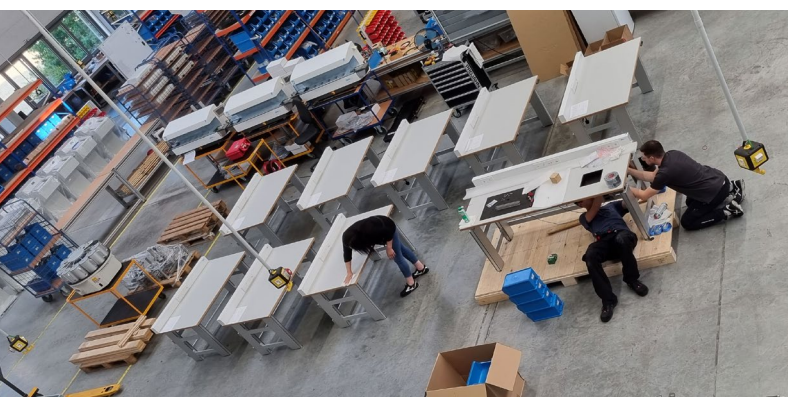
This drew a lot of attention to all in attendance and instantly caught the eye of Sharron Pooley from North Tees and Hartlepool NHS Trust.

Their upcoming project, a refurbishment of a histopathology lab, required new workstations that could maximise the benefits of the laboratory environment to improve employee retention, increase efficiency and productivity whilst simultaneously lowering the risk of repetitive strain injury (RSI), sickness and fatigue.

"As service manager I want to give the staff the best equipment to do the job."

"Fantastic opportunity to have some good kit for our staff in the new build"

- Sharron Pooley, Lab Manager
North Tees & Hartlepool NHS Trust



Exclusive Partnership

Solmedia Ltd have partnered with Slee Medical to supply traditional, dynamic histology equipment made from precision German engineering.

Slee is a company, a brand, a promise of quality and a seal of trust. And it is a place of encounter and movement. All over the world, people turn to Slee with the needs and challenges of their everyday work. As a matter of course the diversity of their clients is an important matter for them.

Want To Know More About Our Histology Equipment Range?

Scan the QR code to see our full Histology Equipment range



Following the IBMS Congress, members of the Solmedia team liaised with not only Sharron (North Tees and Hartlepool NHS Trust) but also members of the wider project which included project managers, designers, and contractors from Geoffrey Robinson, P+HS Architects and North Tees NHS Trust respectively.

Once the specifications were agreed, the project was able to move onto the fulfillment stage where Calvin was able to pass over to Solmedia's project management team who took care of the processing of the order through to successful on-time installation. This involved working closely with Slee's production team and the main contractor onsite to ensure that the specialist haulage contractor and Solmedia's installation team worked cohesively and fluidly in tandem to ensure that the overall project timeframe was met.

Call **0844 8080 900** or email **labsupplies@solmedialtd.com** and speak to our team.

As with all projects of this type, the product specification and ordering was only the beginning, Solmedia's account and technical managers were on hand throughout the surveying, delivery and installation phases and will continue to offer product and sales support going forward.



ERGOTEC

The Ergotec worktable is designed to improve comfort and workflow with its advanced ergonomic features. Combining an electronically adjustable base with an integrated histology specific equipment worktop, as well as being customisable to your requirements, makes the Ergotec the perfect solution for any lab space.

This bespoke table is ergonomically designed to improve comfort whilst working in the lab. With enhanced optional features such as a built-in water bath and cold plate, cable and power management and LED lighting, the Ergotec table is tailor-made to your personal requirements.

The worktable endorses the way we perceive our own physical wellbeing, nurturing the needs of the user to create a continuous positive experience when at work. Installing this new kind of worktable in your lab can avoid premature fatigue, and joint and back pain whilst working which prevents long-term injuries and retains work/employee satisfaction.

The Slee ergonomic worktable aptly named the “**Ergotec**” directly addresses a number of highly talked about topics within the workplace environment such as repetitive strain injury (RSI), shared workstations, disability access and specialist equipment to increase user output.

